

# Crime against Women (CAW) Analysis and Prediction in Tamilnadu Police Using Data Mining Techniques

S. Lavanyaa, D. Akila

*Abstract--- Crime examination and anticipation is a deliberate methodology for recognizing and breaking down examples and patterns in wrongdoing against ladies in Tamilnadu state. Our framework can anticipate metropolitan urban communities which have expansive volume of individuals living territories, workplaces, and corporate organizations intended for crime event and can representation crime point regions. Through the getting higher entry to methodical, crime in sequence experts is capable offacilitate the rule implementation heads and extraordinary examination police groups to attach the further enquiries of understanding violations. To apply the origination of in sequence mining we can take out already unidentified, valuable data from unstructured information. In this paper, we are in push toward software engineering and criminal equity to enhance an information mining system that can help unravel Crimes against ladies quicker. As an alternate specializing in interference of crime prevalence like criminal background of crook and conjointly we tend to area unit concentrating primarily on the crime factors of each day.*

*Keywords--- Crime Patterns, Classification and Prediction, Crimes against Women (CAW), Rule enlistment, Crime Analysis.*

## I. INTRODUCTION

In consistently the Crime rate is expanding altogether. Crime can't be anticipated since it is either efficient or coincidental. Likewise the contemporary innovations and howdy tech techniques encourage culprits in accomplish their offense. As indicated by crime record authority violations against ladies like chain grabbing, sex misuse, youngster misuse, assault, and murder and so on have been expanded. We can't anticipate who all might be the casualties of violations however can foresee put that has likelihood for its event.

The anticipated outcomes can't make sure of 100% exactness results; the outcome demonstrates that our application lessens offensespeed to a specific dimension as a result of giving protection in crime delicate regions. Consequently to fabricate, for example, a ground-breaking crime investigative device we need to gather crime records and assess it.

In tamilnadu police going entirely by authority insights, the state is seeing a down pattern for the situation enlisted in the class of Crimes Against Women (CAW). Insights given by the circumstances Crime Record Bureau (SCRB) of the

Tamil Nadu Police demonstrate as stamped plunge in the diagram that plots instances of CAW over a time of four years. From 2014 to June 2017, the crime rate has descended step by step in numerous types including assault, settlement passing's, attack, lewd behavior, cold-bloodedness by spouse and his relatives, and seizing and snatching of ladies and young ladies [6].

### Challenges of Crime Prediction:

- Enlarge in crime record that should be situating left as well as examined.
- Analysis of in sequence is worrying given that in turn in deficient and incompatible.
- Limitation in being paid crime in order records commencingrule Enforcement office
- Accuracy of the agenda relies ahead precision of the researchlocate.

Decision the model and examples in violations are are questing angle. In the direction of recognize a model, bad behavior investigators take a lot of time, investigating data like fingerprints, and pictures to find whether explicit crime fits into a identified precedent. In case it doesn't coordinate into existing precedent, the data must be assigned new model, it might be used to predict, imagine and forestall crime [8].

Past to this clustering count had used for crime detail in examination. For models, one site, it is revealed that believe has dark tresses and beginning subsequently site/spectator it is uncovered that believe is childhood and from third one reveals with the intention of the criminal have tattoo to one side upper limb and so forth,. By spreading out the criminal focal points it gives a whole depiction beginning special crime scene. Nowadays its greater part is done with the help of numerous insights that the criminologists routinely get from the PC information investigators and their own bad behavior log.

The clarification in the rearalternative this technique is that we have only data about the acknowledged wrong doings; we get the bad behavior plan for a particular place. Along these lines, gathering framework that will rely upon the present and identified illuminated violations, won't give incredible perceptive quality for potential wrongdoings change after some time, so as to be keen to recognize more up to date and unidentified examples in potential, bunching strategy exertion improved [4].

**Revised Version Manuscript Received on 22 February, 2019**

**S. Lavanyaa**, Ph.D Research Scholar, Department of Computer Science, School of Computing Sciences, Vels Institute of Science, Technology & Advanced Studies (VISTAS), Chennai, India.  
(e-mail: lavanya3002@yahoo.co.in)

**D. Akila**, Associate Professor, Department of Information Technology, School of Computing Sciences, Vels Institute of Science, Technology & Advanced Studies (VISTAS), Chennai, India.  
(e-mail: akiindia@yahoo.com)

List of ventures in responsibility Crime Analysis:

- Record compilation
- Categorization
- Prototype Recognition
- Forecast
- Revelation

## II. TAMILNADU LAW ENFORCEMENT CONSTITUTION

Superintendence over the power inside the state is rehearsed by the daily schedule. The pioneer of the power inside the state is that the Director General of Police (DGP). States are detached into legitimate units knows as zones. A social occasion of regions kind a variety, which is thought about by an officer of the situation of Deputy Inspector General of Police (DIGP). A couple of states have zones

including somewhere around two domains, under the charge of an officer of the situation of an Inspector General of Police (IGP). A Senior Superintendent of Police (SSP)/Superintendent of Police (SP) is that the pioneer of the area police association relates is motor aided by an Assistant Superintendent of Police (ASP) and few Deputy Superintendent of Police (DSP). A locale may have a couple of police home office that is square measure watched out for by Inspectors, Sub assessors, Assistant Sub examiners, Head constables and Constables. Police central station is that the basic unit of police association through that each bad behavior and non bad behavior commitments square measure discharged. Police central stations are places where complaints First Information Report (FIR) are held up [17],[18].

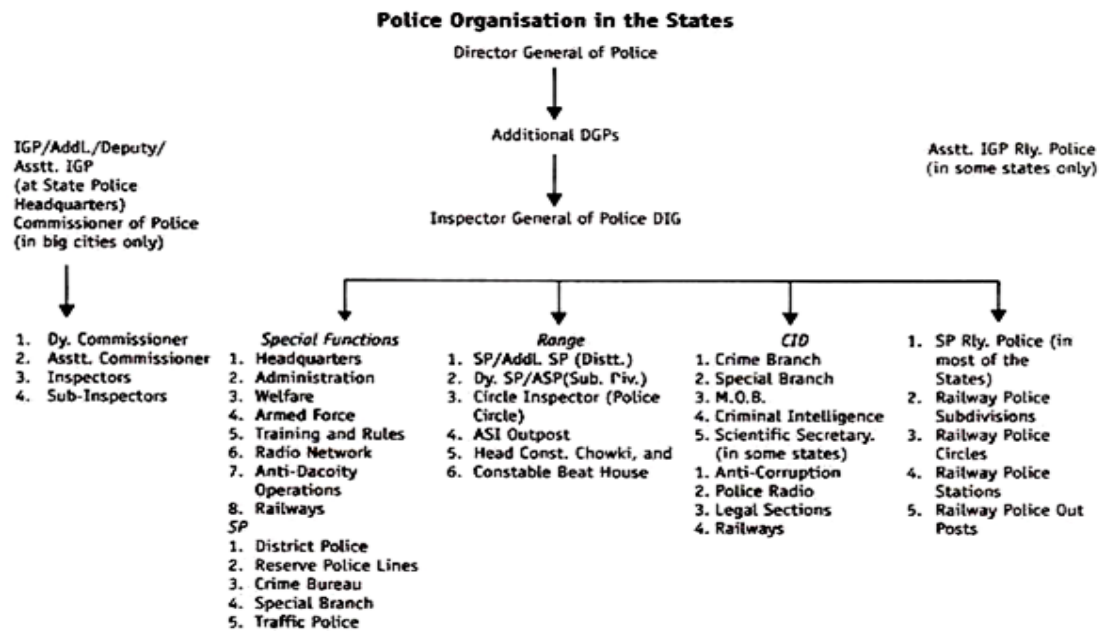


Fig. 1: Law enforcement Structure

Data Mining on Crimes against Women progression

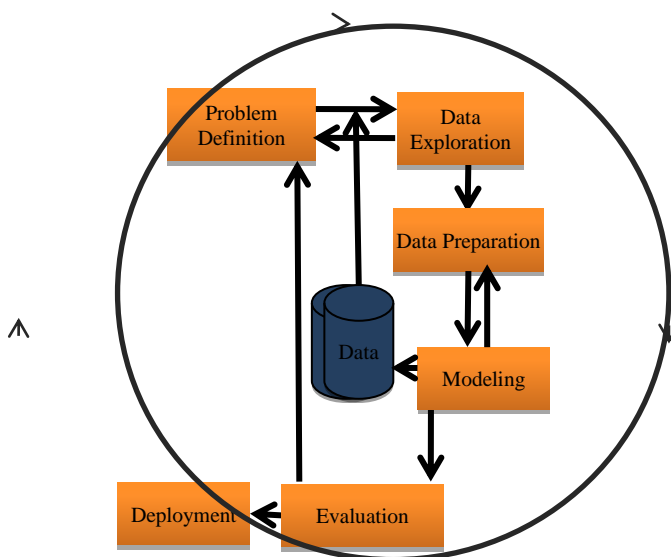


Figure 2: Data Mining Pre Processing Models

Data mining is an associate degree repetitious process that typically involves the subsequent methods:

### Issue classification

An information mining wrongdoing forecast technique begins with comprehension of the tending drawback[21]. Information handling pros and Crime Prediction experts work intently along to plot the strategy goals and hence the necessities from a Crime expectation point of view [15].The strategy intention of followed by converted addicted to a data mining drawback explanation. Inside the drawback explanation segment, information handling devices don't appear to be anyway required.

### Information investigation

Information analyst experts see the implications of subsequent conditions: information, get together, depict, scrutinize the information, and build up excellence issues of the statistics.

A consecutive deal with the data mining masters and in this way the Crimes specialist from the problem classification segment, old data examination apparatuses are required.

#### *Information arrangement*

Information mining authorities manufacture the records show for the displaying technique beginning the obtainable information and data are preprocessed with gather, scrub, configuration the record inside the first-imperative organization as well as conjointly innovative inferred properties are made within an exceedingly record distribution center.

#### *Displaying*

The displaying stage and in this way the evaluation arrange are coupled. They will be revenant commonly to change parameters till ideal qualities are accomplished and high perfection show has been structured.

#### *Assessment*

Information mining authorities gauge the model. In the event that the model doesn't wassail their desires, they are returning to the demonstrating juncture, alteration the constraint, reestablished the reproduction. At the highest point of the evaluation arrange, the data mining experts construct an approach an approach to utilize the data mining results.

#### *Arrangement*

Information mining authorities infer the outcomes and store them in data bases and information product homes and use them for applications.

### **III. METHODOLOGY**

Violence against ladies in tamilnadu includes molestation, abduction, dowry-related violence, and marital violence [7]. The police recorded one, 130 cases throughout the primary seven months in 2013, compared to 860 for the corresponding amount in 2012 in Usilampatti taluk, around 6000 feminine kids were killed in an exceedingly span of two years throughout 1987-1988, accounting to the only largest instance of recorded feminine infanticide.

A major underlying reason behind violence against ladies is that the perception that married ladies is the property of their husbands [2]. Alcohol usage the portrayal of girls within the society and cinemas as sex objects is additionally believed to be major factors.

TamilNadu is that initial Indian state to line up "All ladies Police Stations" to manage with crimes against ladies. When the 2012 Old Delhi assault case in 2013, amid which a woman was assaulted in an exceedingly moving transport, bringing about her demise, the tamilnadu government uncovered a 13-point activity organize together with establishment of Closed-Circuit Television (CCTV) everything considered open structures and booking guilty parties in Goond as demonstration of 1982, that offers non-bailable maintenance as long as one year.

The government needs to extend to see the dowry movement. The government will recommend how to decrease the violence against the women's by rejecting the marries (can provides a reward for the one, United Nations

agency aforesaid regarding the dowry, violence against the women's etc). This can facilitate the government as expected.

#### *Information for Classification and forecast*

The accompanying preprocessing step is likewise connected to the data to help enhance the precision, effectiveness, and measure capacity of the grouping or expectation strategy.

#### *Information Cleaning*

This alludes to the preprocessing of information to dispose of or downsize clamor and treatment of missing qualities (e.g., by supplanting a missing worth with the first for the most part happening worth for that property, or with the premier likely worth upheld insights). Despite the fact that most order calculations have a few instruments for dealing with barefaced or missing data, this progression will encourage downsize disarray all through learning.

#### *Importance investigation*

A few of the traits inside the data is likewise excess. Relationship examination is acclimated build up regardless of whether and any 2 given characteristics are measurably associated. For example, a powerful connection between's traits A1 and A2 would suggest that one among the 2 may be a long way from extra examination a data base may contain digressive characteristics.

#### *Information change and decrease*

The data is likewise rebuilt by standardization, outstanding once neural systems or ways including separation estimations are utilized in the preparation step. Standardization includes scaling all qualities for a given characteristic all together that they fall inside a little low settled differ, for example, - 1.0 to 1.0, or 0.0 to 1.0.

The data can even be redesigned by summing it up to more elevated amount thoughts. An origination chain of command is likewise utilized for this reason [1], [10]. This can be outstandingly useful for persistent esteemed properties. For example, numeric qualities for the properties monetary profit are summed up to unmistakable extents, similar to low, medium, and high.

Data can even be diminished by applying a few elective routes, beginning from wave change and rule components investigation to discretization systems, such as binning, visual chart examination, and bundle.

#### *3.1 Downside Finding-Crimes against Women (CAW)*

##### *Rundown of Crimes*

- Dowry demise
- Women Harassments
- Child misuse
- Gang assault
- Chain Snatching
- Murder

##### *Getting*

We are concentrating additional on bad behaviors like getting to prompt



additional nuances related with it like bad behavior region, time, date, bad behavior type(Which collection of snatching), harmed individual and lowlife names, etc.[14].

*At present we will in general have gotten subtleties like*

- Name of the Person (Victims, guilty parties)
- Locations
- Organization
- Type of wrongdoing ( Whether or not kill , theft)

*Sub classes of wrongdoing type*

- Type of auto miscreant exploit
- Whether any guns used
- Occasion of occurrence
- Confrontation memory
- Criminal groups concerned

*Rule Induction*

Guideline acceptance: is that the technique for removing accommodating 'assuming at that point' rules from learning bolstered connected arithmetic centrality. A Rule based for the most part framework develops a gathering of in the event that rules. Learning speaks to has the shape IF conditions THEN end this sort of standard comprises of 2 segments. The standard forerunner (the IF part) contains one or extra conditions concerning cost of indicator qualities wherever in light of the fact that the standard ensuant (THEN part) expectation concerning the value of an objective trait. A right expectation of the value of an objective property can enhance basic leadership strategy. In the event that forecast runs square measure very discussed in learning mining; they speak to found data at an abnormal state of reflection Rule Induction method can possibly utilize recovered cases for expectations[22].

*Decision tree*

It is an information delineation structure comprising of hubs and branches composed inside the sort of a tree indicated, each inner non-leaf hub is labeled with estimations of the traits. The branches setting out from an encased hub are labeled with estimations of the characteristics in the hub. Each hub is labeled with a class (characteristic value). For the most part models that grasp grouping are the primary procedure of acceptance displaying, choice fitted to information handling [1][20]. There are in profitable to build, simple to decipher, simple to incorporate with Database framework and they have practically identical or better precision in numerous applications.

*Contrasting Classification and Prediction Methods*

Characterization and Prediction techniques will be contrasted and assessed in line and the consequent criteria.

*Exactness*

The exactness of a classifier alludes to the adaptability of an offered classifier to appropriately foresee the classification name of later or previously concealed learning.

*Speed*

Speed alludes to the machine costs worried in creating and exploitation the given classifier or indicator.

*Strength*

This is capacity of the classifier or indicator to make right expectations given boisterous information or information with missing qualities.

*Versatility*

This alludes to the capacity to develop the classifier or indicator proficiently given vast measure of information.

**Table 1: Estimation of Existing System**

S. N O	WRITE R	TITLE	APPLICA TIONS	EXIST ING	PROP OSED	MEASURE MENT
1	Yamuna and Sudha Bhuva Neswari	DataMining techniques to Analyze and predict crimes	WEKA, MAT LAB,	C4.5	Classification and clustering	Use a clustering/classify based model to anticipate crime trends. The data mining techniques are used to analyze the crime data from database.
2	Rasoul kiani, Siamak mahdavi, Amin keshavar zi	Analysis and prediction of crimes by clustering and classification	WEKA	Clustering	Genetic Algorithm, Rapid miner	GA Used to improve outlier detection in the pre processing phase, and the fitness function was defined.
3	Sylvia wal by, Lancaster University, UK.	Improving Statistics on violence against women	MAT LAB7.14	Clustering	Survey data	Indicators of violence against women need to capture the extent as measured by both rate of prevalence.
4	Shiju Sathyadevan, Devan M.S, Surya gangadharan	Crime Analysis and prediction Using data mining	WEKA	Naive bayes	Apriori Algorithm	Accuracy of classification and prediction based on different test sets.
5	Malathi. A, Dr.S.San tosh baboo	An Enhanced Algorithm to predict future crime Using data mining	MV Algorithm	KNN	Apriori, C4.5, decision tree	Experimental results prove that the tool is effective in terms of analysis speed, identifying common crime patterns and future prediction.



### Interpretability

This alludes to the degree of comprehension and understanding that is given by the classifier or indicator. Interpretability is abstract and along these lines harder to survey.

## IV. DISCOURSE

Dominant part of the examination works in Crimes against ladies has utilized the 'WEKA Tools' for their usage; in this way they acquired the better outcomes pursued by the actualized utilizing MATLAB. Credulous bayes was oftentimes utilized and mainstream calculation to arrange and anticipate in the ground of information mining. The Next most utilized calculation is Apriori. The abnormal state of precision has been made exploitation Naïve bayes calculation.

## V. CONCLUSION

So as to investigate the better grouping calculations to foresee Crimes in different urban areas and nations, interconnected examine credentials comprised to be assembled. Investigation demonstrates the preeminent piece of utilizing Tools and calculations. Regard we found that clustering in WEKA utensils, Euclidean distance calculation gives the improved exactness in the metropolitan urban areas violations rate to decrease and foresee. A further report is under advancement to execute with real dataset of specialist's examination work. Appearance of far reaching calculations and devices will be introduced in up and coming paper.

## REFERENCES

1. Yamuna.S, N.Sudha Bhauvaneswari D, Data mining Techniques to Analyze and Predict Crimes, International Journal of Engineering And Science(IJES) Vol-1,Issue-2,PP 243-247.
2. Sylvia Walby, Improving the statistics on violence against women, Statistical Journal of the united nation ECE 22(2005)193-216.
3. S.Bewley, J.Friend and G.Mezey, Eds, Violence against Women, London: Royal College of Obesticrians and Gynaecologists, 1997.
4. Malathi.A and Dr.S.Santhosh Baboo. Article: an enhanced algorithm to predict a future crime using data mining. International Journal of Computer Applications,21(1):1-6, May2011.Published by foundation of Computer Science.
5. A.Buczak and C.Gifford, 'Fuzzy association rule mining for community crime pattern discovery', in ACM SIGKDD workshop on intelligence and security Informatics, Washington, D.C., 2010, PP.1-10.
6. Crimereports.com,2015.[online].Available:http://www.crimereports.com.[Accessed:20-May-2015].
7. Anshu Sharma,Shilpa Sharma 2012 An Intelligent Analysis of Web Crime Data using Data Mining. International Journal of Engineering And Innovative Technology(Ijeit)2(3)
8. Devendra Kumar Tayal et al., Crime detection and criminal identification in India using data mining techniques,AI & Soc(2015) 30, pp.117-127.
9. Roslin V.Hausk and Hsinchun Chen., Coplink: A Case of Intelligent Analysis and Knowledge Management, Proceedings of International Conference on Information Systems, 1999, pp.15-28.
10. Rasoul kiani, Siamak mahdavi, Amin Keshavarzi, Analysis and Prediction of Crimes by clustering and Classification.(IJARAI) International Journal of Advanced Research in Artificial Intelligence, Vol-4, No:8,2015
11. Amarnathan, L.C.(2003) Technological Advancement: Implications for the Crime, the Indian Police Journal, April-June.

12. Krishnamoorthy, S.(2003) Preparing the Indian Police for 21<sup>st</sup> Century, Puliani and Puliani, Bangalore, India.
13. Marshall, G.M. and Marshall, D.R.(2008) CRIME IN INDIA, Annual Series, 1954-2006, Published by the Government of India, Ministry of Home Affairs, National Crime Records Bureau, Electronic Dataset and Codebook, Published by center for Systemic Peace. <http://www.systemicpeace.org/inscr/inscr.htm>
14. Shiju Sathyadevan, Devan M.S, Surya Gangadharan S."Crime analysis and Prediction Using Data mining", 2014 First International Conference on Networks & Soft Computing (ICNSC2014),2014
15. Krishnamoorthy P, Dr R.Gopinath." Survey on Classifier algorithms for health care system in Diabetes", International Journal of Engineering &Technology,7(2.26)2018 pp19-24.
16. Syed Ahsan Shabbir and Kanna Dasan R 2013An Effective Fraud Detection System Using Mining Technique International Journal of Scientific and Research Publications 3(5)
17. <http://data.gov.in/catalog/persons-arrested-under-crime-against-Women>
18. <http://data.gov.in/catalog/age-group-wise-victims-murder>
19. ShyamVaranNath., Crime Pattern Detection Using Data Mining, International Conference on Web Intelligence and Intelligent Agent Technology, December 2006.
20. Dr.D.Akila, Dr.C. Jayakumar, "Acquiring Evolving Semantic Relationships for WordNet to Enhance Information Retrieval", International Journal of Engineering and Technology, Volume 6, November 5, pp. 2115-2128, 2014.
21. Dr.D.Akila, Ms.Vidya and Mr.S.Rajesh , "Optimization Based Information Retrieval with the Enhancement of Annotator in WordNet Application", Journal of Advanced Research in Dynamical & Control systems Volume 10 , Issue 2, pp. 318-323,2018.
22. D.Akila,S.Sathya, G.Suseendran, "Survey on Query Expansion Techniques in Word Net Application", Journal of Advanced Research in Dynamical and Control Systems, Vol.10(4), pp.119-124, 2018.